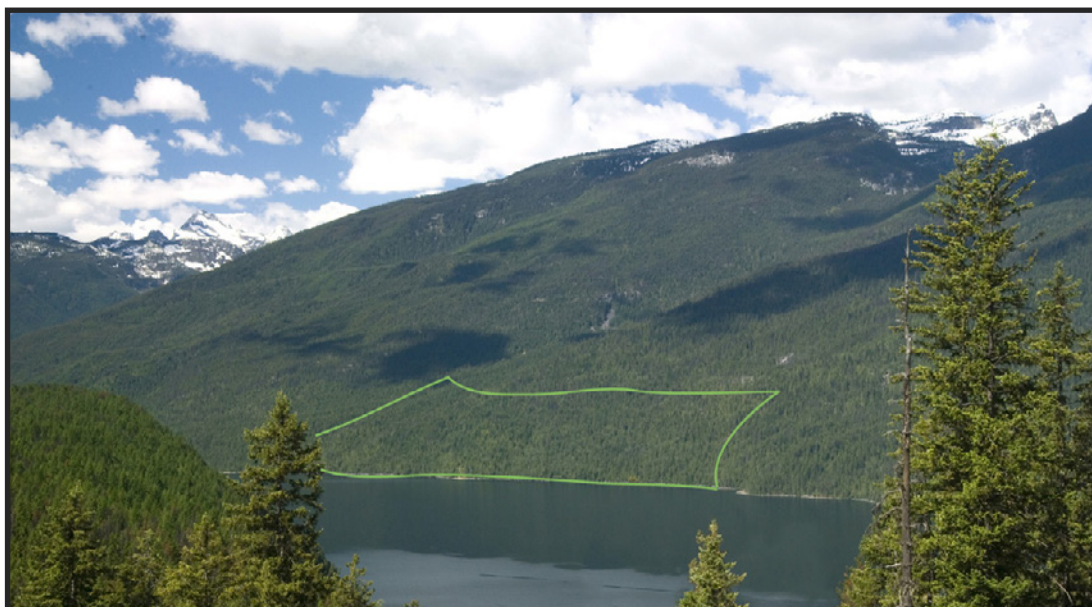


THE VALHALLA MILE: A PRECIOUS PLACE ON SLOCAN LAKE

YOU CAN HELP SECURE “THE VALHALLA MILE”

Think how fulfilling it would be to know that you had helped protect a whole *mile* of our beloved Slocan Lake's shoreline -- and a large piece of forest ensconced in Valhalla Provincial Park — *forever*. Such an acquisition will save it from entrepreneurial exploitation such as for condos, marinas and other developments. That is the opportunity we have, right now. You can help purchase a spectacular 1.7 kilometres (slightly more than a mile) of shoreline on the west side of Slocan Lake. The privately owned 155-acre parcel will make a stunning addition to Valhalla Provincial Park, helping to protect the lakeshore and the Park core from development.

By the end of 2008 we need to raise \$1.5 million to complete the purchase. The largest portion will come from BC Parks and another large portion from foundations and other institutional funders. That leaves approximately \$300,000 to be raised from the community of "people who love parks." Given that time is short and the need is great, please consider donating generously. All donations are a "vote" for the project which will be considered by the other funders when determining the amount of their support.



The Valhalla Mile property on the west side of Slocan Lake: 155 acres of forest and a mile of undeveloped lake shore. (Property boundary approximate.)

*A fundraising prospectus from The Valhalla Foundation for Ecology & Social Justice,
in partnership with TLC The Land Conservancy of British Columbia*

VALHALLA: LET'S KEEP IT THE "HOME OF THE GODS"

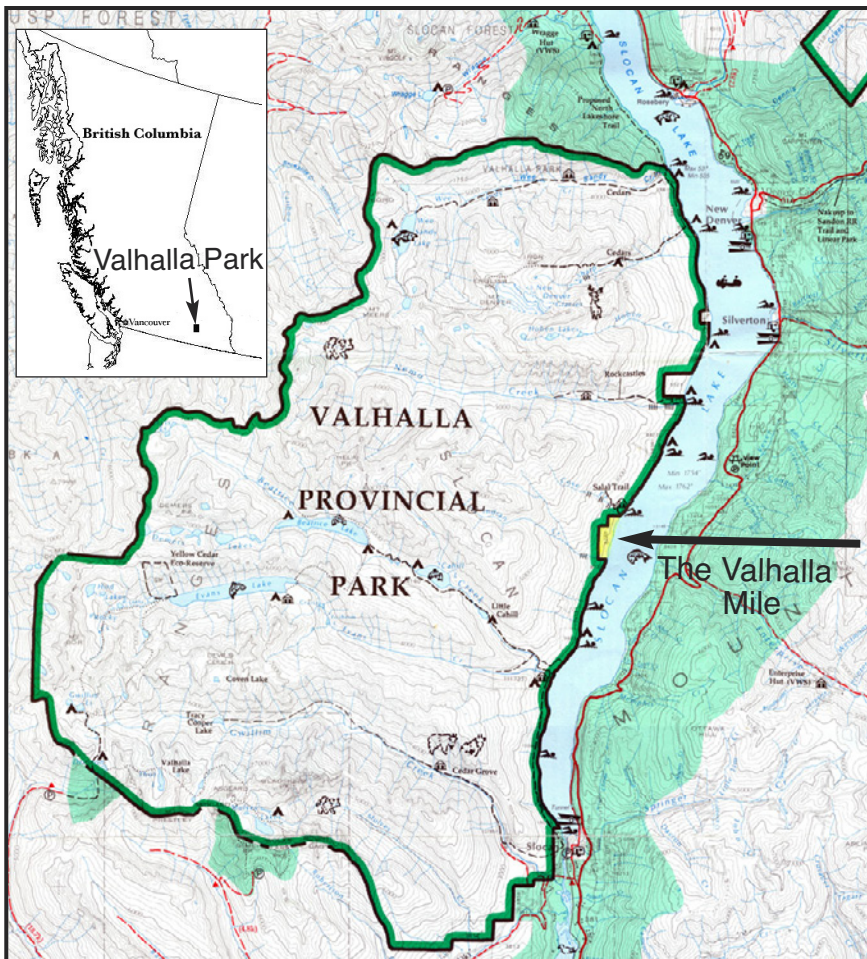
In 1983, after eight years of citizen advocacy led by the Valhalla Wilderness Society, the B.C. government established Valhalla Provincial Park amid much celebration. That was 25 years ago. The Park has become a treasured place to connect with nature for residents and visitors alike.

In B.C., it was one of the first large valley-bottom to mountain-top parks. The current size of the Park is 50,000 ha. Along Valhalla Park's 25 kilometres of shore-line are old growth forests, ancient Aboriginal rock paintings, dazzling waterfalls, sandy beaches, rushing clear creeks, and cliffs of dizzying heights.

These mountain slopes provide habitat for bears, cougars, bobcats, wolverines, eagles, among many others. In spring grizzly bears descend to feed on glacier lily bulbs on shore-line cliffs; sandy beaches are a favorite local camping spot (and dragonfly hatch). Just north of the Valhalla Mile, in the Park, are First Nation's pictographs and the only known occurrences in the interior of B.C. of several coastal shrubs such as salal and red huckleberry.



25 years old: Valhalla Provincial Park. The Valhalla Mile is part of a wilderness shore-line we want to keep wild.



Every year, thousands of people come to enjoy Valhalla Park's world-class hiking, fishing, sailing, kayaking, canoeing and other forms of recreation. So many lakes in southern B.C. have become polluted and degraded, over-run with cottages, condos, resorts, marinas, houseboats, jet-skis and the other trappings of development. But thus far, local communities in the Slokan Valley have resisted the commercialization and overcrowding of Slokan Lake -- while remaining delighted to share the lake and our beautiful valley with visitors who appreciate why it is so special.

Work with us to keep it that way. Help purchase "The Valhalla Mile" -- a vital piece of property on Slokan Lake.

ABOUT OUR ORGANIZATIONS

The Valhalla Foundation *for Ecology and Social Justice*

The Valhalla Foundation for Ecology & Social Justice is a parallel organization to the Valhalla Wilderness Society which has been instrumental in securing protection of approximately 1.25 million acres of parkland in British Columbia during the past 30 years. Both organizations are Registered Charities. The Valhalla Foundation's mandate is to protect private land for conservation. The campaign for the Valhalla Mile is being spearheaded by Biologist Wayne McCrory, internationally respected expert on bear conservation. He was instrumental in the protection of the Khutzemateen Grizzly Sanctuary and the Spirit Bear Conservancy. He was a key player in the creation of Valhalla Provincial Park, along with his sister, Colleen McCrory, who passed away in the summer of 2007. Protection of the Valhalla Mile was one of Colleen's dreams. We hope to honour her memory by securing it for conservation and adding it to Valhalla Park.

"Valhalla Park is that rarest of things in today's overstressed world... a jewel of beauty and serenity, where nature reigns in all her glory."

Colleen McCrory, seen here during the campaign for Valhalla Park with her son Shea, was working to complete this legacy at the time she passed away, by trying to arrange purchase of the Valhalla Mile.



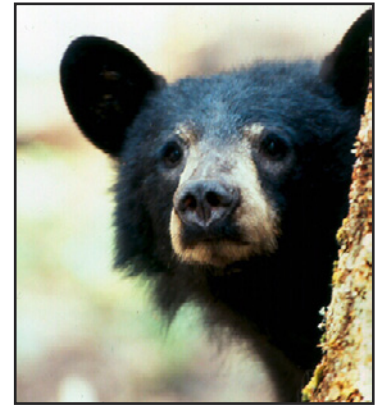
The Land Conservancy of BC was founded in 1997 by a small group of individuals with a grand vision – to create a “National Trust” for British Columbia, modeled after the National Trust in Britain. Since our inception, TLC has grown rapidly to become one of the largest and most respected land trusts in the province. Our membership has grown to more than 8,000, and continues to increase rapidly. The Land Conservancy is a non-profit, charitable land trust working throughout British Columbia to protect important habitat for plants, animals and natural communities as well as properties with historical, cultural, scientific, scenic, agricultural compatible or recreational value. TLC has secured some 300 land acquisitions or conservation covenants, protecting an area totalling 125,000 acres of private land.

**The campaign to secure The Valhalla Mile is also supported by:
The Slocan Lake Stewardship Society and the West Kootenay EcoSociety**

YOUR INVITATION TO PROTECT THE VALHALLA MILE FOREVER



Indian Creek forms the approximate southern boundary of the Valhalla Mile property. With the purchase of this property, it will be protected and will belong to the public. The falls shown above are only a short climb from the lake.

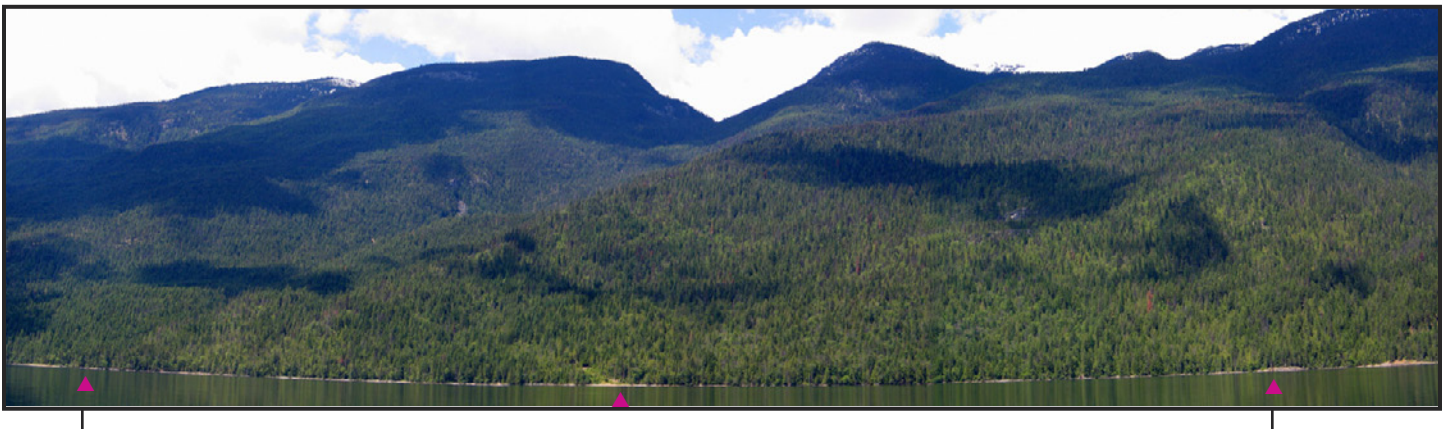


The Valhalla Mile property is vital to the habitat continuity of the entire west shore of Slokan Lake and of Valhalla Park. Black bears are one of many species that live there.

GIVING OPTIONS

You can make a gift now, or make a pledge. Either way, you will help ensure this priceless piece of land is protected, forever, for everyone. If you pledge, your gift does not have to be made until the purchase agreement is finalized (you will be notified by year-end 2008). At that time, you will be asked to forward your gift to either The Valhalla Foundation or TLC The Land Conservancy of B.C.

You may benefit from donating a gift of securities (e.g. stocks, bonds, mutual funds) instead of cash. The federal government has *eliminated the capital gains tax* payable on securities transferred to a registered charity. For more information contact Carla Funk, Manager, Donor Relations, at TLC: Tel: 250-479-8053 (1-877-485-2422); E-mail cfunk@conservancy.bc.ca



The outer indicators show the approximate shoreline span of the 155-acre parcel. The centre indicator points to an existing small building that will be removed once the land is acquired for public use (made part of Valhalla Provincial Park). The beautiful mountains in the background are all part of Valhalla Park.

MY GIFT / PLEDGE

Yes! I will help add the Valhalla Mile to Valhalla Provincial Park

Please make a gift and/or your pledge now, so that we can be sure of your support. With a pledge, your cheque can be forwarded when the purchase is finalized (we will contact you). You can either pledge to give in 2008, or in January of 2009, whichever works better for you from a tax standpoint. All donations are fully tax creditable.

Please make your cheque out to either the Valhalla Foundation or TLC The Land Conservancy of B.C.

PLEDGE / DONATION FORM

Please fill in and mail to either Valhalla Foundation or TLC

I/We Hereby Pledge / Donate: (Amount)	I/we will donate _____ at this time I/we pledge to donate _____ by year-end 2008 I/we pledge to donate _____ in early 2009
Name(s)	
Postal Address	
Phone Number	
E-Mail Address	
Comments / Follow-Up	[e.g. If you wish us to contact you to arrange a gift of securities or to discuss other giving options, please indicate]
Date	
Signature	

Please return to:

Valhalla Foundation for Ecology & Social Justice

Box 63, Silvertown, B.C. V0G 2B0

Phone: 250-358-2796

E-mail: waynem@vws.org

Web: www.vws.org

[Registered Charity number: 86847-5641-RR0001]

or

TLC The Land Conservancy of British Columbia

301 – 1195 Esquimalt Road, Victoria, B.C. V9A 3N6

Phone: 250-479-8053

E-Mail: admin@conservancy.bc.ca

Web: www.conservancy.bc.ca

[Registered charity number: 88902 8338 RR0001]

We respect your privacy. We will never sell, trade, or rent your name to another organization.

A tax receipt will be issued for all donations.